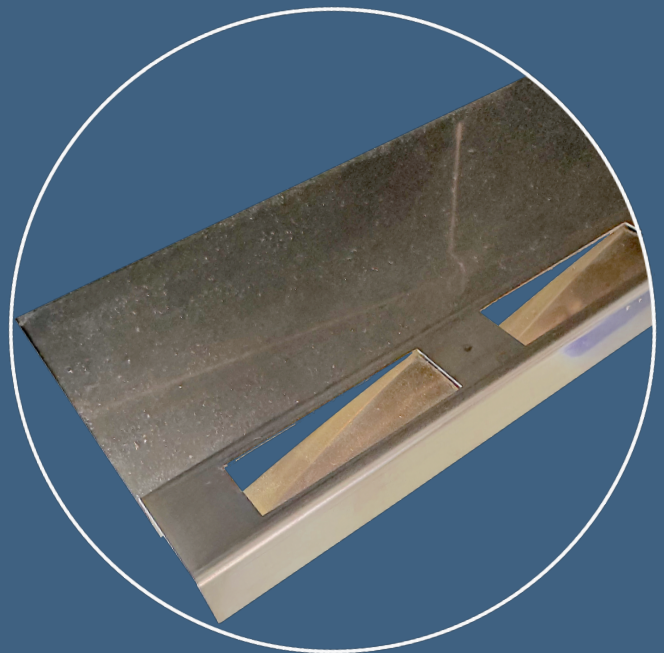
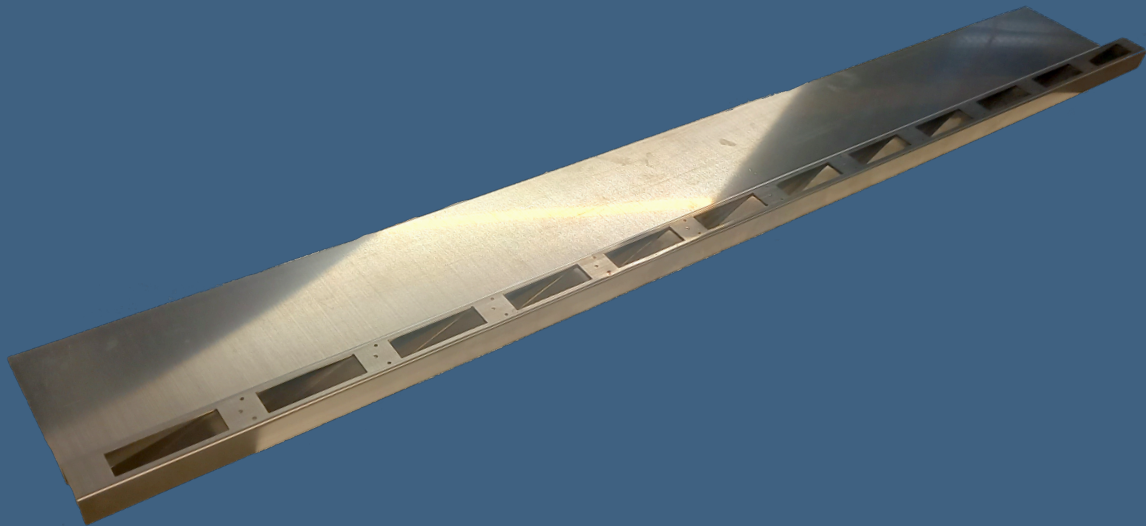




SnapTemp[®] Pyro





BIMETALLIC FIRE BARRIER FOR VENTILATED FACADES WITH NON-COMBUSTIBLE CLADDING

Reference: STP-01

Description:

Preformed perforated sheet metal, equipped with **thermo-bimetal shutter elements**, for fire safety in ventilated facades with **non-combustible** cladding



Advantages:

- Quick and easy installation in exterior insulation, without fasteners
- Durability
- Immediate closure in the case of fire
- Maintains full ventilation outside of fire conditions, even under very hot weather
- Compatible with ventilation gaps from 30 to 80mm width.

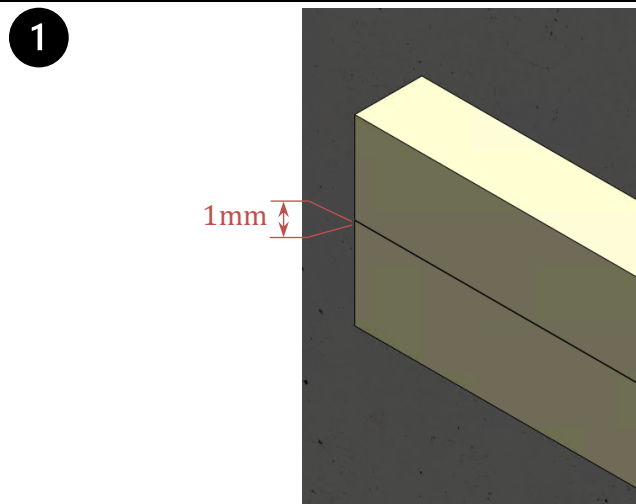
Technical specifications:

Materials	Sheet metal: Stainless steel Bimetal element: Invar + co-laminated Stainless steel
Conformity	Class A1 materials, according to the European commission decision 96/603/CE: no combustible material in the assembly, or likely to spread fire.
Dimensions	1000x140x20mm
Activation temperatures	Barrier closing at 120°C ±10 Barrier re-opening at 75°C ±10
Opening surface	> 10 000 mm ² per linear meter
Storage temperature range	No restriction
Life duration	Unlimited
Storage max duration	No restriction
Weight	around 1kg
Delivery conditions	Pallets of 480 pieces: 20 bundles of 24 pieces 24kg per bundle

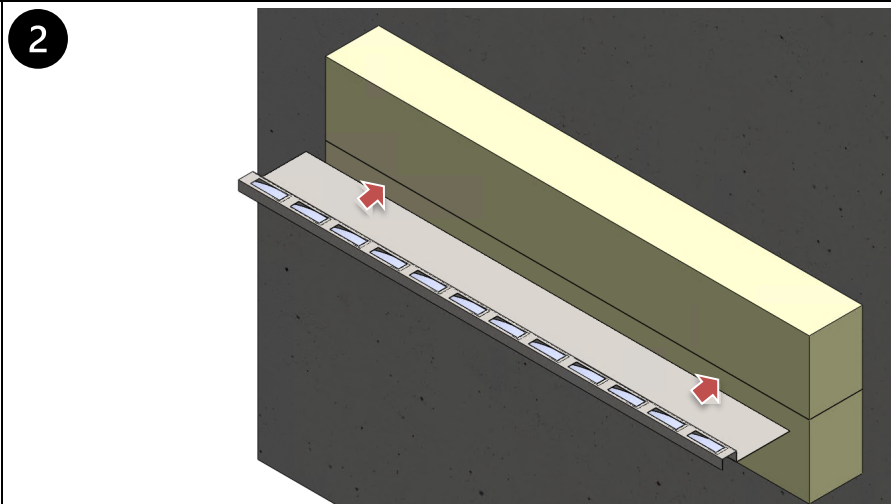
Mounting instructions:



Provide a slot for inserting the sheet metal (by cutting the insulation or between two consecutive insulation panels).

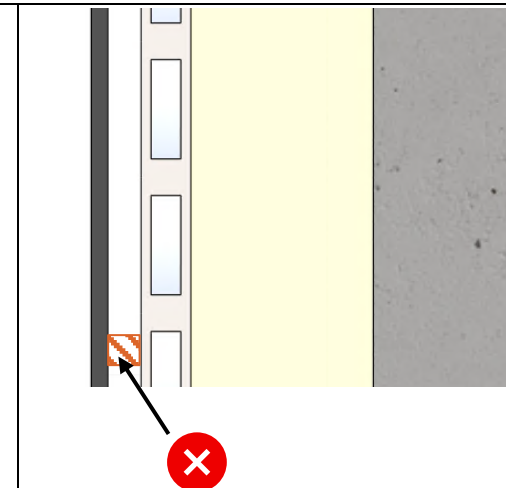
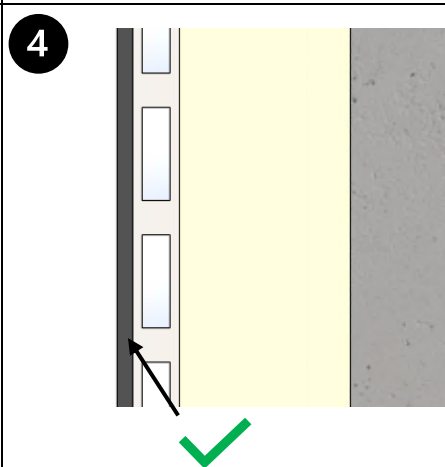
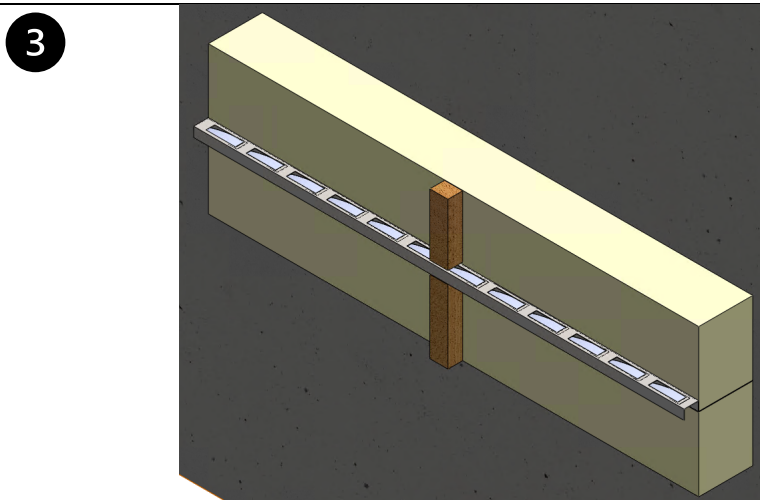


Slide the sheet metal into the slot until it is in the correct position against the cladding.



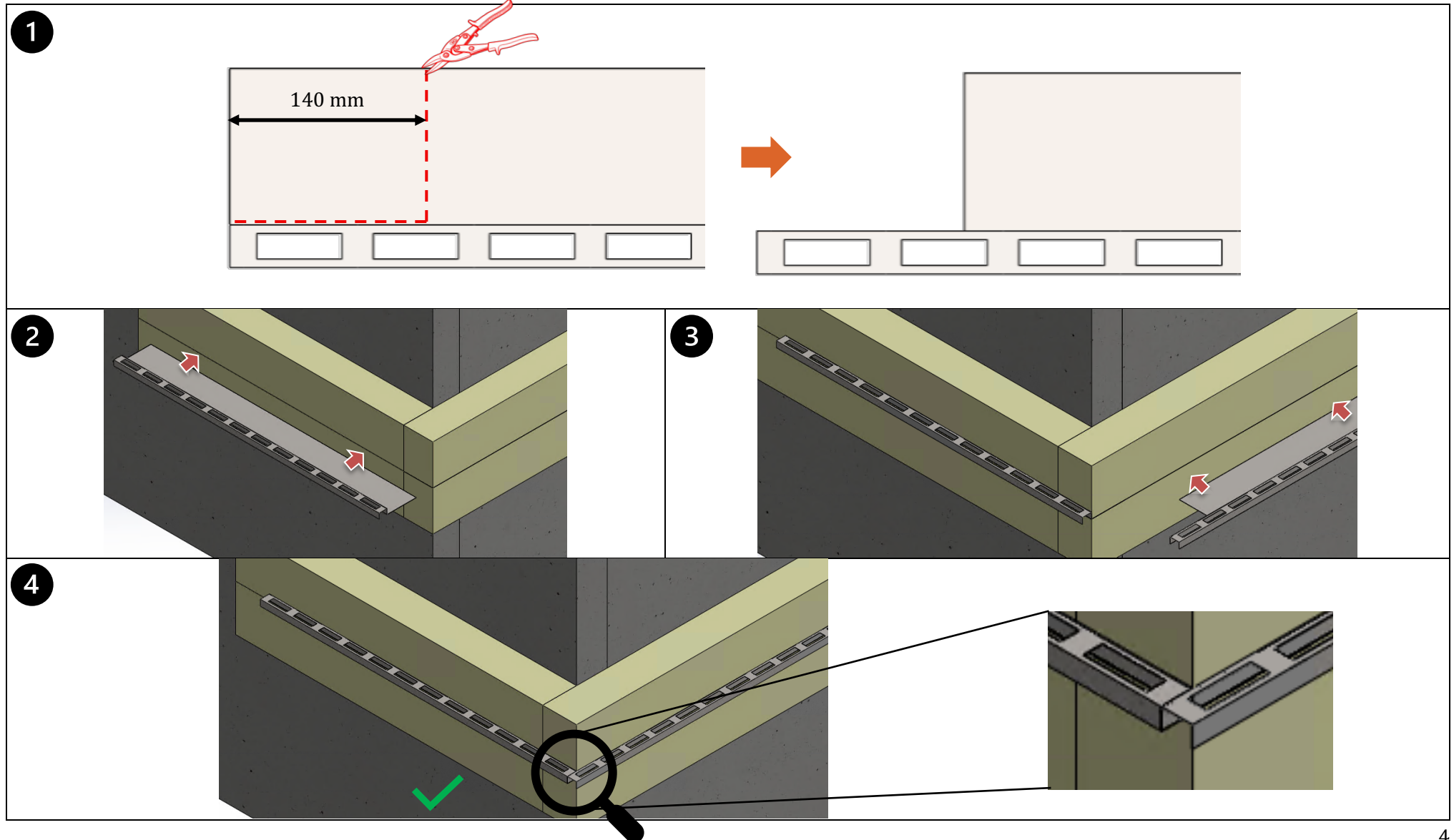
Continue installing the battens and assembling the facade in accordance with the builder recommendations.

Attention: push cladding until it touches the fire-barrier



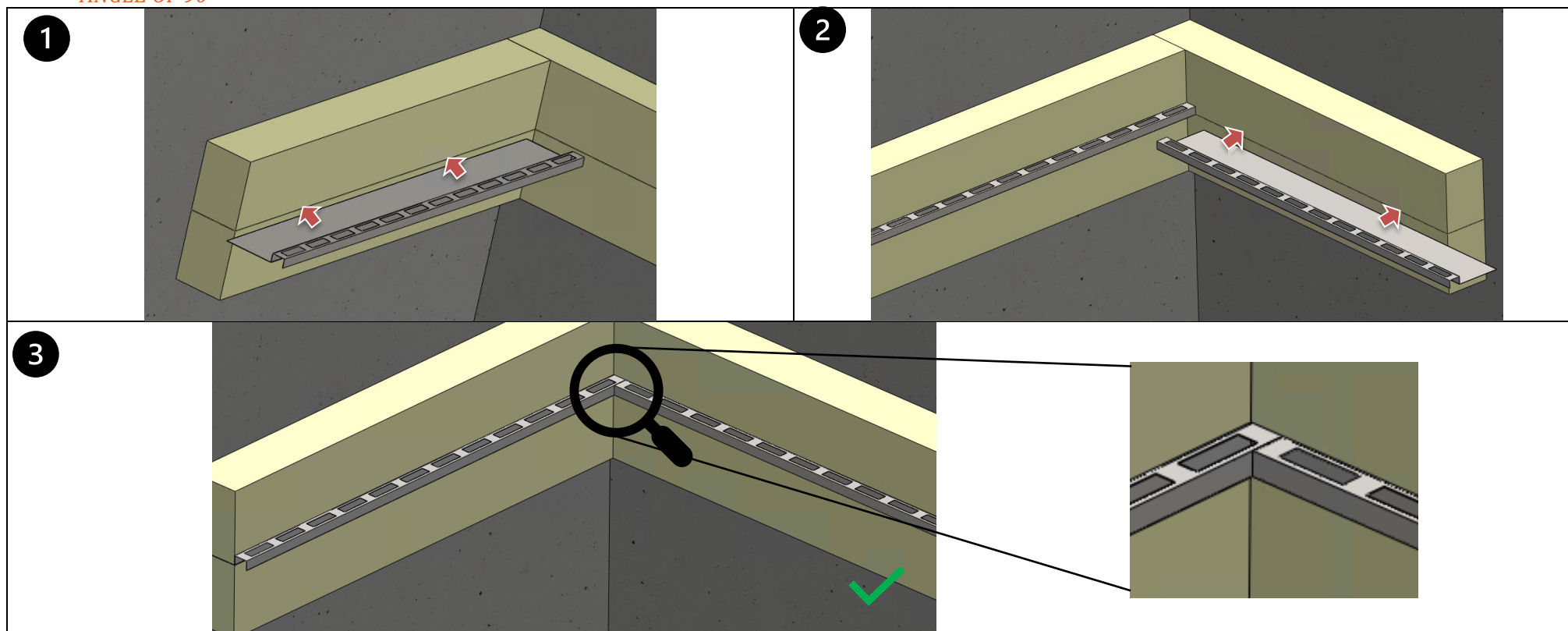
pecial situation with angles:

ANGLE OF 270°





ANGLE OF 90°



KEYWORDS:

- Ventilated façade
- Non-combustible cladding
- Exterior renovation
- Exterior building insulation
- Fire barrier
- Fire stop
- Fire safety



Delta Concept
1 Rue de l'Isere
38120 Saint Egreve - France

+33 4 76 53 55 81
contact@delta-concept.fr
www.delta-concept.com

